

Scale Rulers

Scale rulers are made by copying the pages that follow on letter-size label paper. Copy either the pages for inches or centimeters. After copying, the top edge of the rulers in inches should measure 10" and the rulers in centimeters should measure 25 cm. They include the following scales: 1/2, 1/3, 1/4, 1/5, 1/6, 1/8, & the circumference of a circle. They are then made as two separate rulers that can be joined together with a pivot screw. The layout of the rulers is designed so that the most frequently used scales, 1/2, 1/4, and 1/8, are on the outside of the combined rulers. The less frequently used scales are on the inside of the combined rulers.

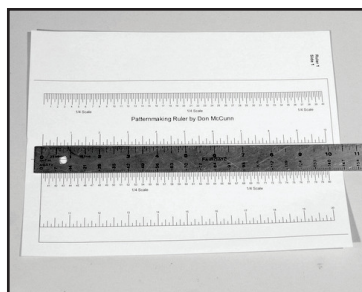
Materials

Scale rulers can be made from readily available tools and supplies.

- Full sheet permanent adhesive labels (8-1/2" x 11" or A4)
- Clear tape or letter-size laminating sheets from GBC.com
- Pivot screw (optional)
- Two strips of 2" x 22" stiffener board using: mat board or a 2" x 24" c-Thru ruler.

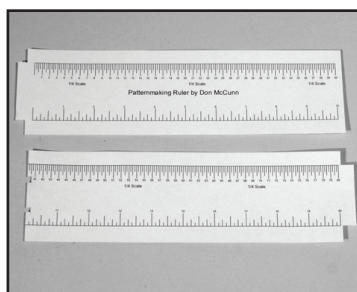


Pivot Screw



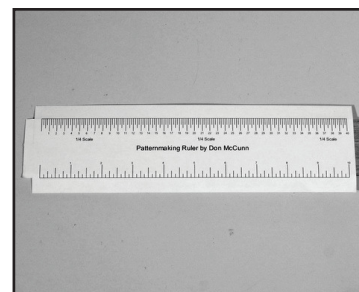
Step 1. Cut two stiffener boards 2" x 22".

Step 2. Copy the scale rulers on label paper. Print at 100% so that each ruler section is 10" long.



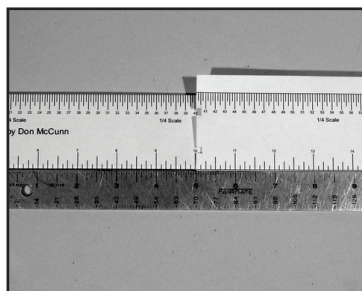
Step 3. Cut the label paper leaving a 1/2" (12 mm) overlap around the outside.

Step 4. Notch the ends of the label paper as shown in the illustration above.



Step 5. Attach the first half of the Side 1 scale ruler to the stiffener board. The horizontal lines of the ruler should align to both edges of the stiffener board.

Step 6. Fold over the ends and sides of the paper to the back of the stiffener.

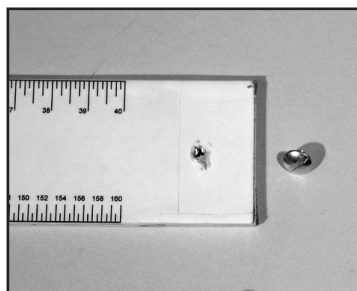


Step 7. To maintain the accuracy of the ruler, carefully align the second half of Side 1 to the first half.

Step 8. Attach Side 2 of the scale ruler to the opposite side of the stiffener board, then trim off the excess paper.

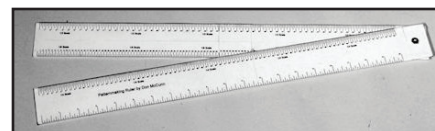
Step 9. Cover the scale ruler with clear tape or laminating sheet.

Step 10. Prepare the second ruler the same way.

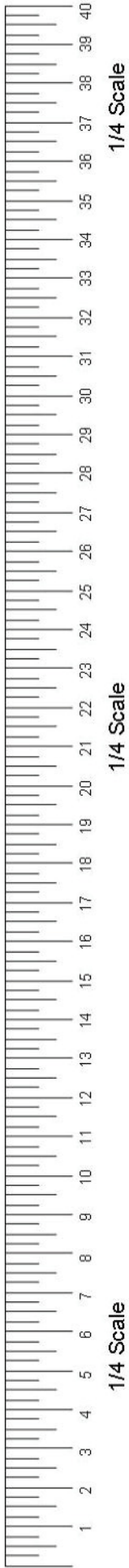


Step 11. Make a mark 21" (53 cm) from the end of the ruler, 1" (2.5 cm) down from the top, then drill or punch holes at the mark.

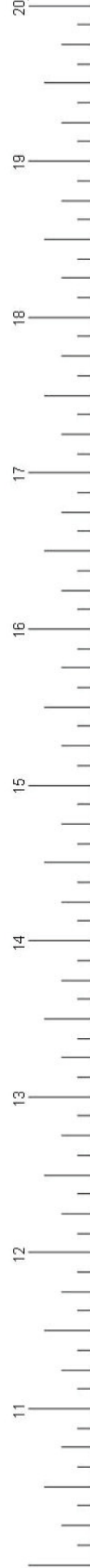
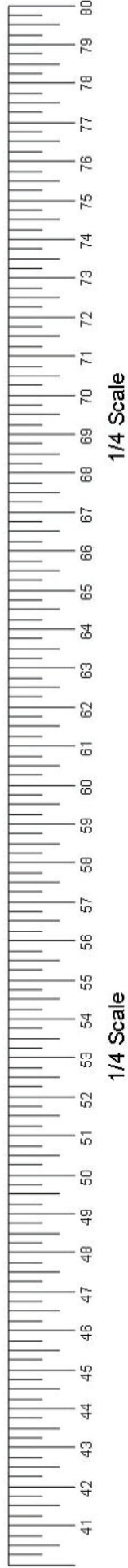
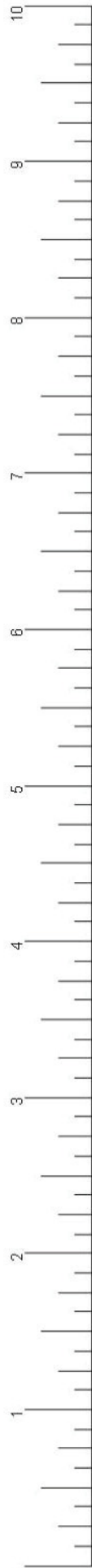
Insert the pivot screw through both rulers and secure.



The Finished Rulers



Patternmaking Ruler by Don McCunn



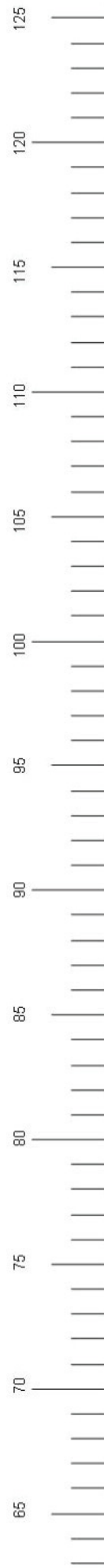
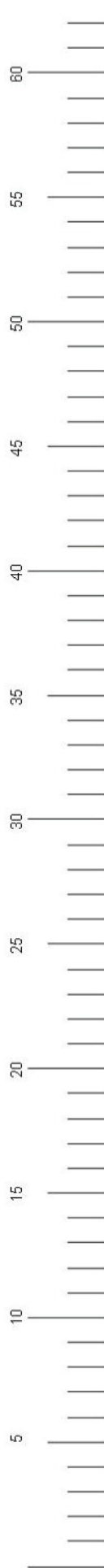
Ruler 1
Side 1
In Inches

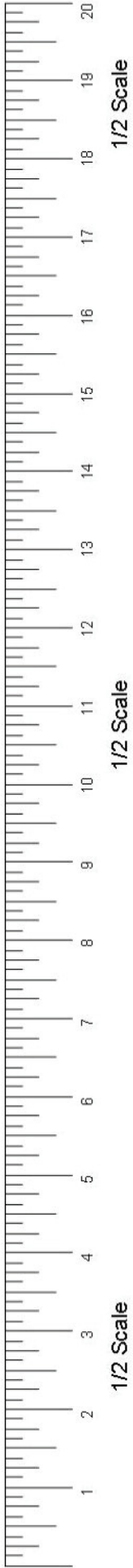
Ruler 1
Side 2
In Inches



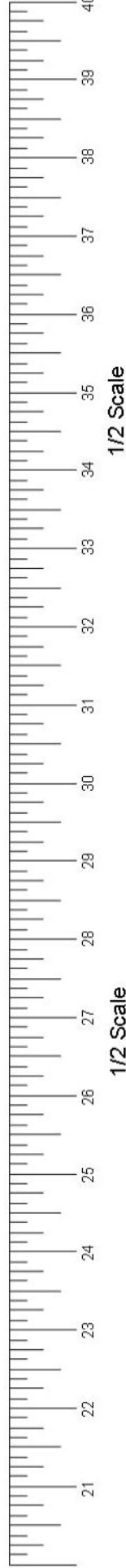
Patternmaking Ruler by Don McCunn

Circumference of a circle



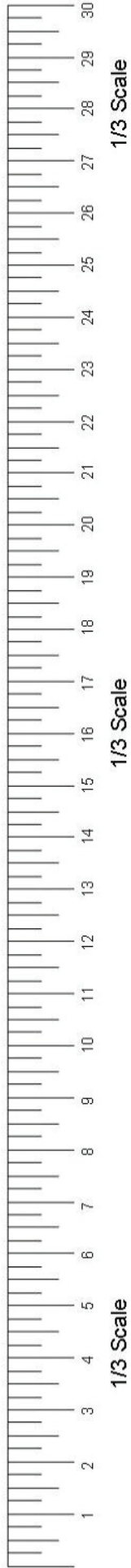


Patternmaking Ruler by Don McCunn

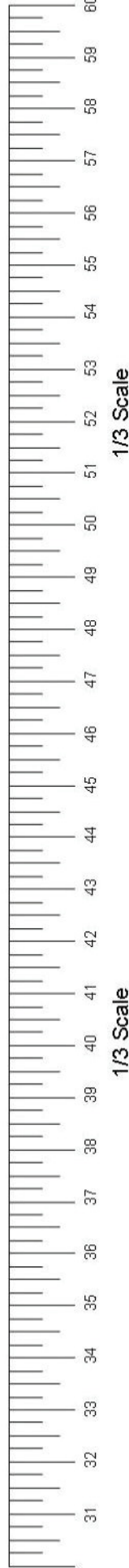


Ruler 2
Side 1
In Inches

Ruler 2
Side 2
In Inches

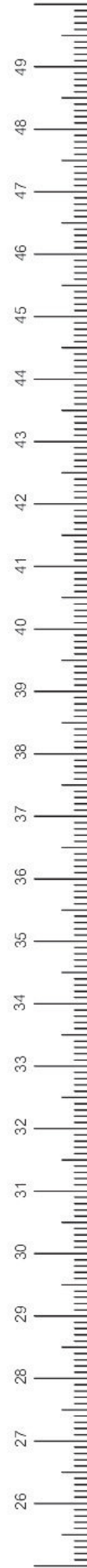
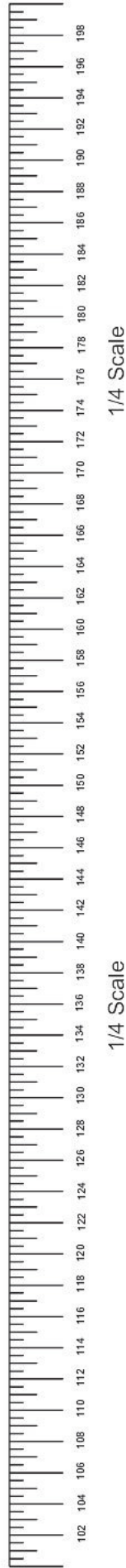


Patternmaking Ruler by Don McCunn



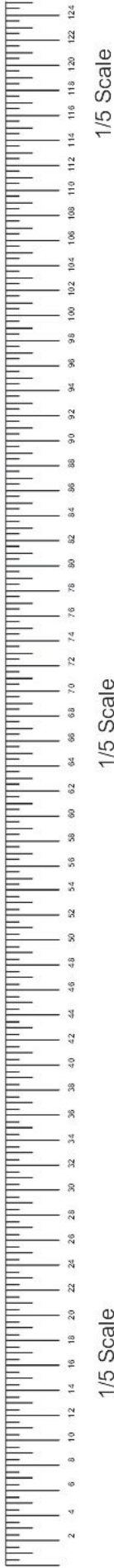


Patternmaking Ruler by Don McCunn



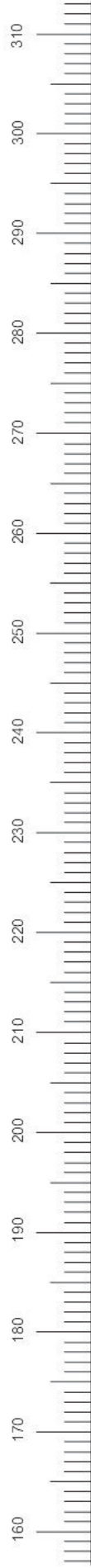
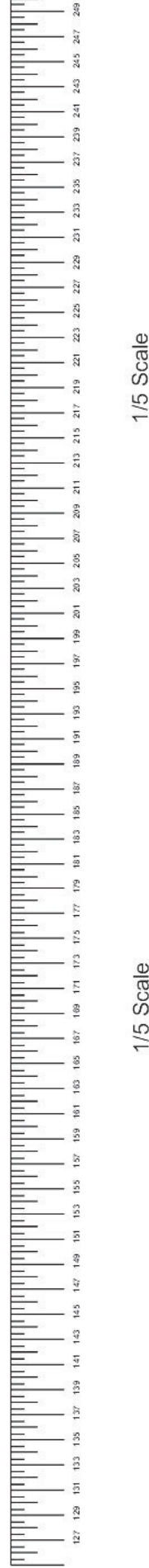
Ruler 1
Side 1
In CM

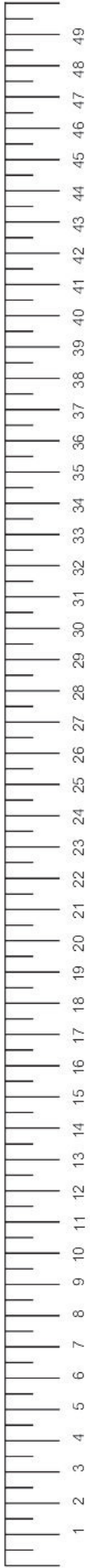
Ruler 1
Side 2
In CM



Patternmaking Ruler by Don McCunn

Circumference of a circle



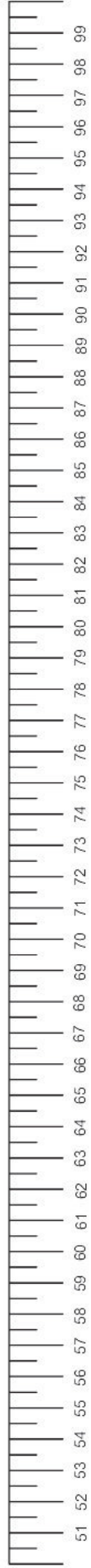


1/2 Scale

1/2 Scale

1/2 Scale

Patternmaking Ruler by Don McCunn



1/2 Scale

1/2 Scale



Ruler 2
Side 1
In CM

Ruler 2
Side 2
In CM



Patternmaking Ruler by Don McCunn

